

Product description VOSS quick connect system 203

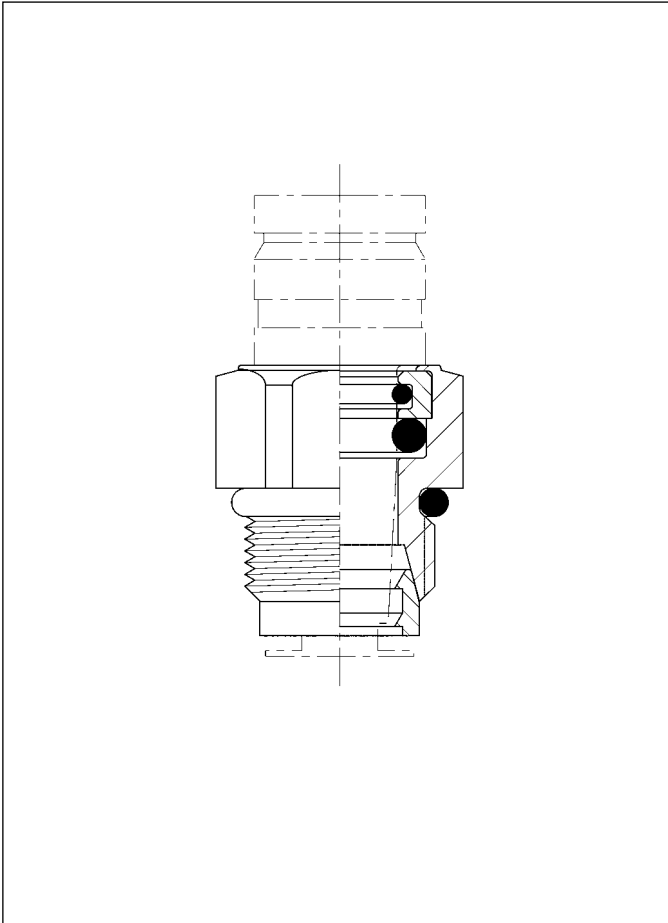


Fig. 1

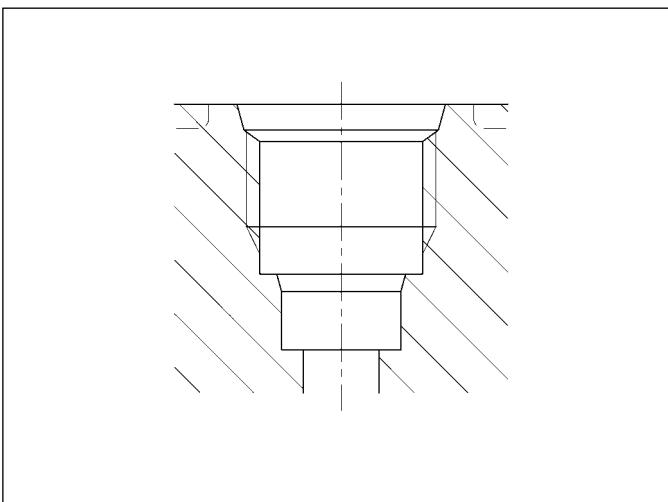


Fig. 2

Application

The VOSS quick connect system 203 enables rapid and safe assembly of nylon tubing in air suspension, fuel and auxiliary systems.

The quick connect system 203 is available in different models (integrated assemblies Fig. 1, straight fitting and mouldings with standard stud thread Fig. 4+5) and for 4x1 and 6x1 nylon tubing.

The integrated design features low overall height and is particularly suitable for direct connection to units in restricted installation environments. Use of the integrated model is conditional on the tapped holes in the unit being designed as stepped bores (Fig. 2)

The moulded port may be of plastic or metal. Dimensional drawings can be supplied on request.

Detailed information is contained in Catalogue 203.

The system is suitable for tubing made of polyamide 11, polyamide 12 or TEEE (Hytrel) conforming to the following standards:

- DIN 74324
- DIN 73 378
- ISO 7628
- NFR 12-632
- SAE J 844

Range of application

The VOSS quick connect system 203 is designed for use in the -40°C to $+100^{\circ}\text{C}$ temperature range.

Its rated operating pressure is 13 bar, but due attention must be paid to the compressive strength of the nylon tubing used.

Possible applications for other operating conditions are available on request.

Functional description

The nylon tubing can be fully inserted into the connection without the use of additional equipment.

When so fitted, the tubing is sealed against any medium leakage by way of a large-volume O-ring.

A second O-ring prevents any contamination from penetrating the connection from outside.

The grip ring has the function of retaining the fitted tube in place in the connection.

The tubing may be disassembled and removed from the connection without any damage.

Individual components/material (Fig.3)

1. Assembly plug, plastic
2. Dirt-protection O-ring *
3. O-ring seal *
4. Thread-sealing O-ring *
5. Male fitting, brass
6. Grip ring, brass

* Dependent on temperature and medium

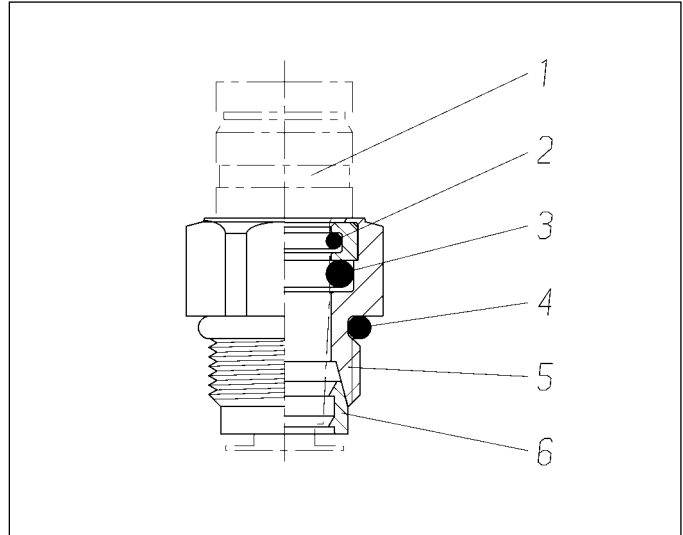


Fig. 3

Straight connections Mouldings

The illustration (Fig.4) shows a straight connection with the integrated assembly which is screwed into a stud with matching moulded ports.

The illustration (Fig. 5-8) shows mouldings in the form of studs or manifold ports with fitted integrated assemblies.

Straight fittings and mouldings are available with different stud threads.

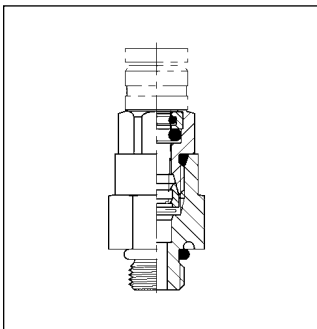


Fig. 4

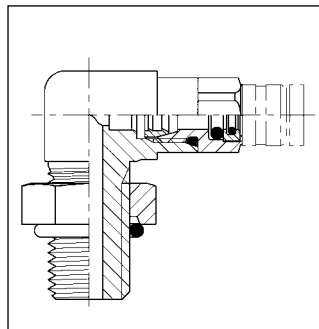


Fig. 5

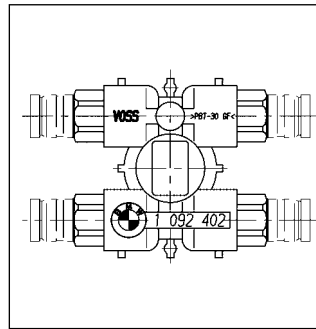


Fig. 6

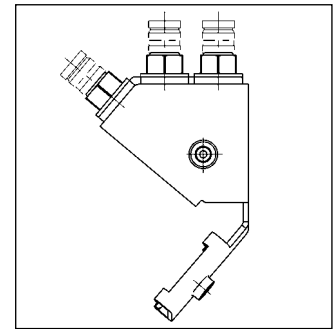


Fig. 7

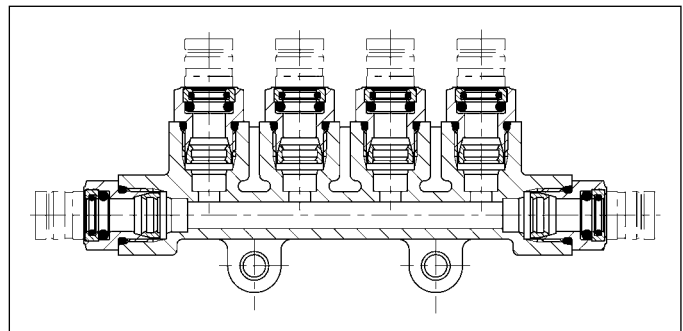


Fig. 8