

## Product description VOSS quick connect system 250

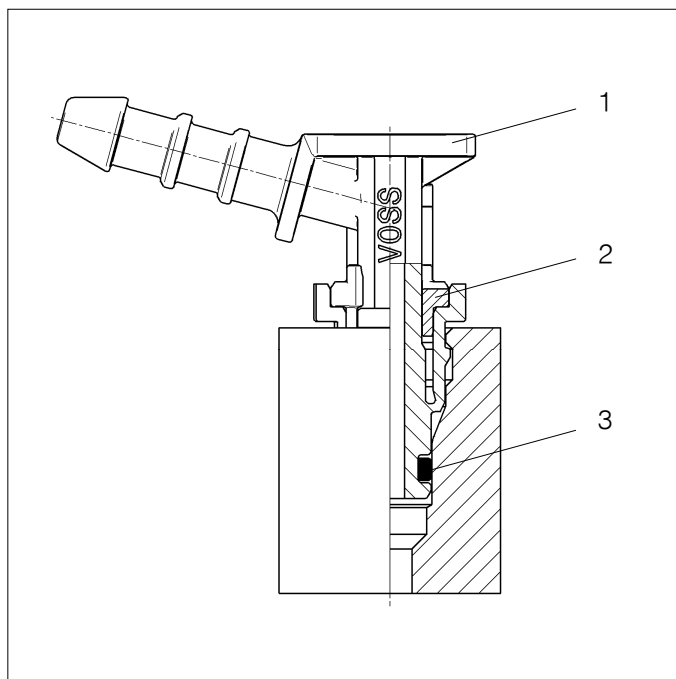


Fig. 1: VOSS quick connect system 250

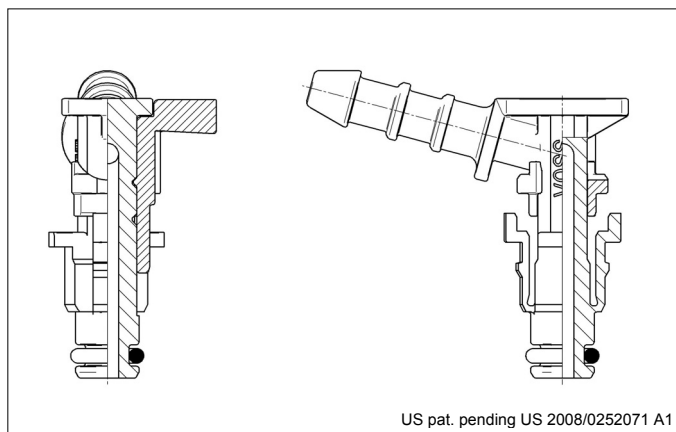


Fig. 2: Plug not locked

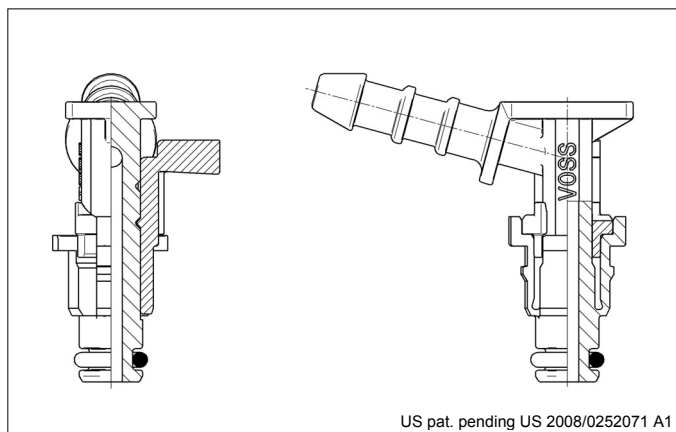


Fig. 3: Locked plug

### 1. Purpose of use

The VOSS quick connect system 250 is used primarily as connecting element between fuel lines and fuel components.

### 2. Range of application

The VOSS quick connect system 250 is designed for diesel fuel according to DIN EN 590.

Depending on operating conditions, the system is applicable at negative pressure and at a positive pressure of up to 5 bar.

Quick connect system 250 is designed for a temperature range between  $-40^{\circ}\text{C}$  and  $+120^{\circ}\text{C}$ .

Applications for other media, temperatures and pressure ranges on request.

The VOSS assembly instructions have to be observed.

### 3. Single components

VOSS quick connect system 250 is composed of (see fig. 1):

- 1 Elbow plug (PA)
- 2 Locking element (PA), shown here in the locked position
- 3 O-ring (FKM)

Other designs are possible.

The plug is suitable for the connection of hoses. The connection of polyamide tubes requires a different fir-tree profile.

VOSS quick connect system 250 requires a connecting port at the component according to fig. 5 or an adequate adapter.

A specification of the connecting port can be provided if required.

The connecting port should preferably be made of brass or steel.

See figs. 4 and 5 for dimensions.

### 3. Functional description

The function of VOSS quick connect system 250 is provided by inserting the plug into the connecting port, while paying attention to the assembly instructions.

Pressing down the locking element serves as an additional locking of the connection (see figs. 2-3).

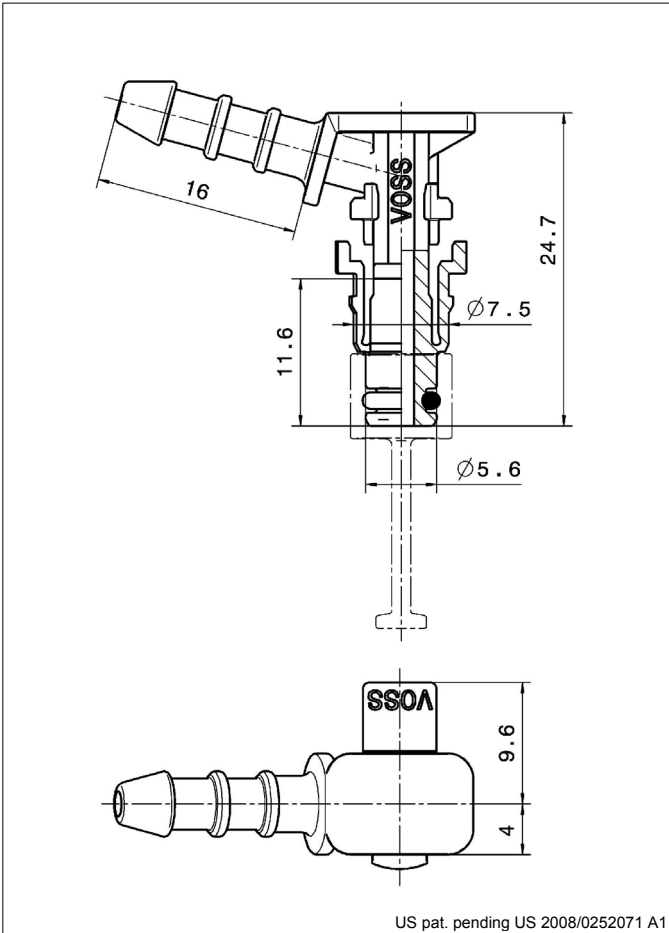


Fig. 4: Plug dimensions

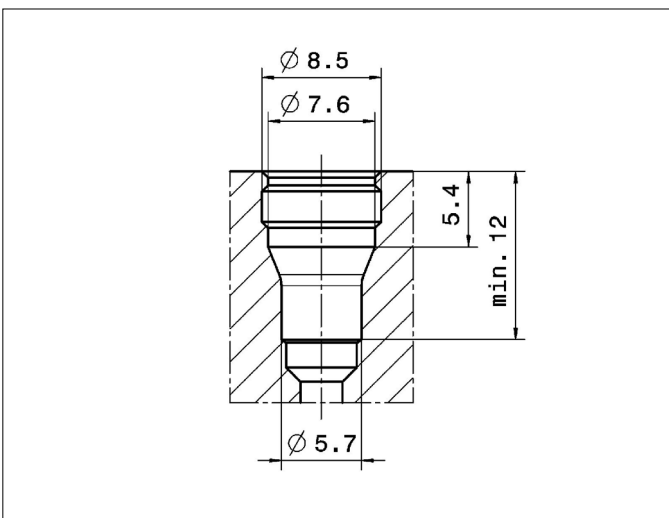


Fig. 5: Connecting port dimensions